



Enjoy your next
Sundowner on the Swan.



Theming Partners.



Our theming partners are here to help with your event:

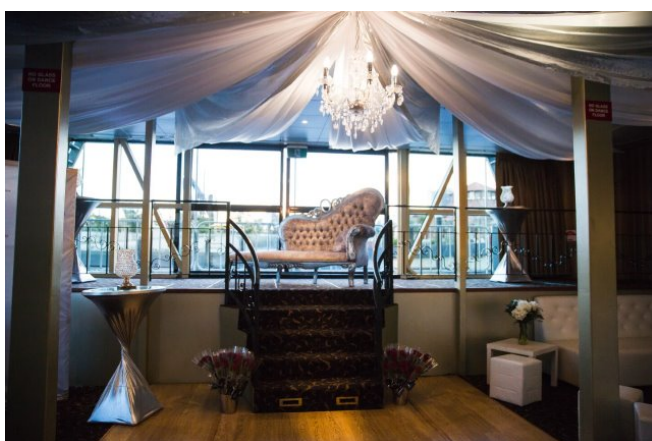
Event Style – Exquisite Corporate Events
www.eventstyle.net.au

Elysium Functions
www.elysiumfunctions.com.au

Phenomenon Event Services
www.phenomenon.com.au

DJ & Photo Booth Services
www.youdjnow.com.au

Perth AV Services – complete event solutions
<https://www.pav.com.au>



Sample Menus.

Street Food Menu

Served in a box fork & walk style
Design your own menu

Satay Marinated chicken wings with rice noodles (GF)

Asian Style Salad w/- rare roast beef (GF)
Steamed bao buns, pulled beef & honey mustard dressing
Mini ginger chicken burgers, lime mayo (GFO)
Beef Rendang w/- fluffy white rice

Mini beef/lamb slider, brioche bun (GFO)
Mini vegetarian slider, brioche bun (V)
Beer battered whiting and crispy fries (GF)

Tempura prawns on Asian slaw
Pulled beef, chipotle, black bean & rice

Italian meatballs, pasta, sugo & sage
Jumbo Chicken & Chilli Sausage, bun
Vegetable curry, jasmine rice (V)
Crumbed spinach and ricotta ravioli with tomato sauce (V)

(GF) Gluten Free
(GFO) Gluten Free Option available
(V) Vegetarian w/- vegan options

Pricing

Choose Two	Quoted
Choose Three	+ \$5 pp
Choose Four	+ \$10 pp

All menus include
Dessert Platters of Petits Fours with
Tea & Coffee Station

Finger Food Menu

Choose eight items

Savory Selection

Marinated prawn spoons (GF)
Mini hamburgers, chilli jam (GF option)
Lamb slider, tzatziki
Vegetarian spring rolls and sweet chilli (V)
Chicken/Beef satay skewers, peanut sauce (GF)
Assorted sushi (V) (GF)
Smoked salmon and roasted capsicum bruschetta
Middle eastern spiced meatballs
Tempura prawns, curry dipping sauce
Fish Goujons, tartare dipping sauce (GF option)
Ricotta & spinach sausage roll
Mini beef bourguignon pies (GF option)
Meat and vegetarian quiches (GF option)
Wilted balsamic mushrooms (V) (GF)

Dessert Selection

Dessert delights (GF options)

Optional extra - Charcuterie Grazing Table

Assorted cured meats, cheese wheels, breads and local olives

Sample Menus.

Tapas Menu

Choose ten items

Seafood

Asian prawn spoons, sweet chilli, lime & coriander (GF)

Meat & vegetarian sushi (V) (GF)

Salt & pepper squid

Tempura prawns, curry dipping sauce

Smoked salmon and roasted capsicum

bruschetta (GF option)

Meat

Beef rossini on a garlic crouton (GF option)

Chicken/Beef satay skewers (GF)

Beef slider, monterey jack cheese, chilli jam (GF option)

Lamb kofta, yoghurt & mint dressing

Jalapeno poppers

Steamed bao buns, pulled beef & honey mustard dressing

Mini ginger chicken burgers, lime mayo (GF option)

Vegetarian

Mediterranean Vegetarian Tarts (V)

Spinach & Pumpkin Risotto Balls (V) (GF)

Char grilled asparagus roulade (V) (GF)

Wilted balsamic mushrooms (V) (GF)

Roasted beetroot shell w/- cream cheese & orange garnish (V)

Dessert Selection

Eclairs, profiteroles, mousse cones (GF options)

Table Service

Alternate drop

Entrée

Thai beef salad, rare beef, lemon-flavored coriander leaves, cucumber and fresh mint

Main

Rib-eye Harvey beef fillet
potato and sweet potato bake
broccolini
port and red wine jus

Corn fed chicken breast
filled with bocconcini and sundried tomatoes
potato and sweet potato bake
broccolini

Dessert Selection

Petites fours Éclairs
Dessert shots

Selection of Twinings teas and coffee

Beverage Packages.

Three Beverage options are available on the Crystal Swan: Cash Bar arrangements; Client may pay with a tab/on consumption where a record of all beverages consumed is tallied at the end of the event; Crystal Swan all inclusive packages, standard and superior.

Please note BYO is not permitted.

Standard Package

Fat Yak Draught Beer
Carlton Dry Draught Beer
Corona Peroni Nastro & Leggera
Little Creatures Rogers & Bright Ale
Pure Blonde, Atomic Pale Ale
James Squire 150 Lashes & The Chancer
Strongbow, Sweet, Original & Pear Cider
Bulmers Original Cider
Guinness
Evans & Tate Semillon Sauvignon Blanc WA
Evans & Tate Cabernet Merlot WA
Rothbury Estate Sparkling Cuvee VIC
Assorted juices
Soft drink selection
Still and sparkling water

Charged at \$20 pp for the first hour plus \$9 pp for each subsequent hour

Superior Package

Fat Yak Draught Beer
Carlton Dry Draught Beer
Corona, Peroni Nastro & Leggera
Little Creatures Rogers & Bright Ale
Pure Blonde, Atomic Pale Ale
Matso's Ginger Beer
James Squire 150 Lashes & The Chancer
Custard & Co, Bulmer Apple & Pear Cider
Guinness
Pierro Semillon Sauvignon Blanc WA
Capel Vale Chardonnay WA
Pierro Cabernet Sauvignon Merlot WA
Vasse Felix Cabernet Sauvignon WA
Jansz Sparkling Cuvee TAS
Aperol Spritz
Assorted juices
Soft drink selection
Still and sparkling water

Charged at \$28 pp for the first hour plus \$13 pp for each subsequent hour

Frequently asked questions.

How long is the cruise?

Our corporate packages are for three/four/five hours in duration, your choice.

Where does the vessel cruise?

Your vessel will depart from Barrack Square, travel west under the Narrows bridge past the Old Swan Brewery and into Matilda Bay. Our journey takes us past the University of Western Australia and the Royal Perth Yacht Club towards the

Raffles Hotel at Canning Bridge, the captain will then steer her down river before it is time to turn around and return to Perth. The journey follows the same route returning to the city and your students will enjoy the views of Kings Park, the city skyline and river foreshore.

What about stability?

The Crystal Swan has three hulls, one on each side and one in the middle and combined with the massive weight is a very stable boat when cruising. As with all vessels on the water it will move depending on traffic but any motion is usually very swift and comfortable.

Where do our guests embark/disembark?

The Crystal Swan departs and returns to Barrack Street Jetties in the Perth CBD. Arrangements may be made for guests to board at the Mends Street Jetty in South Perth although disembarkation at that jetty is subject to timing.

Do you have preferred suppliers for decorations?

Theming for your event can be quite simple as the vessel provides an ever changing view as you cruise down the river.

Your coordinator can provide a list of preferred suppliers and some good advice on who to use depending on your requirements.

Are any decorative/ party etc items not permitted?

It is not allowed to fix items, confetti/rice is a no-no, unstable center pieces (they must have a solid base) and candles must be enclosed.

Is there parking nearby?

We recommend parking at the Perth City Council car park opposite the Perth Concert Hall. This car park is open 24 hours a day, seven days a week and is a short 5 minute walk to the jetty.

Will someone help me organise my event?

Yes. We have an experienced event coordinator to assist in planning your event. We suggest a visit to us prior to discuss the detail including decorations, timing, menus and final costs.

Who will be on board on the day to organise my event?

An event coordinator will be onboard at all times to ensure what we promised to be delivered is actually delivered.

Do you cater for special diets?

Yes, your event coordinator will enquire early in the planning process if you have any special dietary requirements so that we may be prepared; religious, lifestyle and allergies can all be accommodated as long as we are informed.

Can i bring my own music/band/entertainment on board?

Yes. You are welcome to use our in house system, utilise our Ipod dock, arrange a DJ or even book a live band. If you need any suggestions regarding live music we can also assist. It is best check on our system a couple of days before your event.

Pricing inclusions?

Quotation pricing includes the basic needs for all events; tables, chairs, table cloths, crockery, table napkins, cutlery and glassware as well as the appropriate crew levels and wait staff but does not include items that may be particular to your event.

Capacities?

The vessel can comfortably accommodate up to 100 guests on one level for a formal sit down meal (up to 170 guests over both levels) and up to 200 guests for a stand up cocktail style event over both levels.

Do you have wheel chair access?

Unfortunately no. The Crystal Swan is not wheel chair friendly although events in the past have included the occasional wheel chair bound guest. There are no disabled toilets onboard and the suitability of the vessel remains at the discretion of the guest concerned.

Can I change the menu?

We are very flexible with our menus; so if you wish to make changes we are happy to assist. Changes to the menu may incur additional costs.

Is there a minimum number of guests?

Yes. The minimum number of adult guests for our event packages begin at 40. You can have numbers less than 40 but must still pay for the minimum charge.

Can I bring my own caterers?

Yes. You are welcome to arrange a professional catering company to provide the food, a galley fee will apply and this fee will be determined by the menu chosen. Food cooked and prepared by a non registered outlet will not be permitted.

What about my beverages?

Beverages may be paid for by the following arrangements; packages, cash bar or on consumption.

Is the food prepared on board?

Yes. All menus are prepared and cooked on board in our commercial kitchen although we do not organise food tastings.

What if it rains? Is windy? Storming?

As we are fully enclosed, rain is no problem but the wind can be an issue due to the box shape of the boat. Marine Safety places a restriction on the vessel departing the jetty if the winds are 30 knots or stronger although your event will continue at the jetty until the winds subside or the function concludes. Unfortunately this can happen and therefore is included in the terms and conditions sent to all clients prior to booking. The Master of the vessel will determine if conditions are safe or unsafe.

Who will look after my guests during the cruise?

We all will, and your event coordinator will ensure that guests are happy, and being well looked after. The staff ratio is around 1:15 and both bars are operating during the evening.

What embarkation time should I put on the invitation?

We offer a complimentary 30 minute boarding time and thus recommend that guests arrive 1/2 an hour prior to departure, the Captain may agree to depart after the allocated time but in this case there will be no extension to the cruising times.

What if guests want/need to disembark for any reason during the function?

As our valued client you are welcome to alter the cruising timetable/route but unfortunately water taxis are yet to come to Perth so arrangements need to be in place with the Captain prior to departure to ensure guest satisfaction.

Inspections for my event

The vessel is open Monday through Friday 10.00 am – 3.00 pm and on Saturdays by appointment. To arrange an inspection call or email and we will set up a time to suit.

What should I do if I want to book a date for my event?

If you are happy then there are two options available; pay the deposit at that time or place a tentative hold for your preferred day. A deposit to secure your booking is then due 7 days after the hold is placed. If a deposit is not received then the date is automatically released, follow up contact is not guaranteed.

What happens after I book?

After you have paid the deposit we will send through a receipt and confirmation form with details as known to date. It is recommended that you visit us prior where we will discuss the arrangements in detail.

The Crystal Swan has a three page questionnaire that once completed will be the bible for your event. Menus with final numbers are due 2 weeks before your event with the balance due 7 days prior

Recent Testimonials.

Our guest's experience at the Crystal Swan is extremely important to us, here is just some of the recent feedback we have received:

To Tam, Peter, the Crystal Swan team and Tim (DJ) - Thank you so much for Thursday's cruise. Everyone mentioned what a great time they had and that it was 'the best Christmas Party yet'!

Everything ran smoothly, the food and drinks were delicious, the decorations looked great, the Red wine prizes were an unexpected appreciated touch, the music was great and just overall we were so happy with the entire night.

When I get a chance I'll be leaving a review on Google/Facebook.

Joelle
Zurich Financial Services
Dec 2018

I would like to thank you and the staff who worked on Saturday for a great event. The feedback from my guests was very positive. Great food, friendly staff, well timed with bringing out the food, enough food, great venue etc. Everybody had a fantastic time. I certainly enjoyed the day.

Marthe December 2018

I held a corporate dinner event on the Crystal Swan late in Oct 2017 and can say the event far exceeded our expectations. From the planning stages, through to set up and finally service/catering at the event – we were impressed. The staff and crew are wonderful, the food is not your typical “boat” food (so don't be afraid) and the boat itself is really quite unique and allows fantastic views to the city and surrounds. I would book with Crystal Swan again and recommend them as a venue option no questions asked. Thanks again Patty, Tam, Peter, Skipper and Crew!

Jae Eve

Facebook Nov 2017

It was a great night! ... even made more special by such awesome friendly staff and fabulous venue.

Will definitely recommend your venue/services and will definitely post a review on Facebook.

Lidia. May 2017

Ryan & Kieran's 21st

Peter and the crew were very accommodating, everyone enjoyed themselves. Great night.

Vanessa. Jason Windows
November 2017

On behalf of all the students and staff that attended the Year 10 function aboard the Crystal Swan last night, we all thank you and the crew very much for a spectacular night!

Your assistance and smooth running of all the food and drinks was amazing and accolades to the awesome Dora for her exceptional cooking.

Matt was excellent as our music director and please pass on our thanks for the help with the entertainment.

We most certainly will be recommending your cruise to all and sundry as we had a brilliant time and felt quite at home while moving up and down the Swan.

We also will keep your company in mind for any future events we would like to cater for and look forward to a close association.

Tracey Sheikh
Yule Brook College

Crystal Swan Cruises

Jetty 5, Barrack Square, Perth WA 6000

M 0412 312 248

E peter@crystalswan.com.au

www.crystalswan.com.au

